

AMSTERDAM

ALL
ACRYLICS

dream × create

AUXILIARIES



ROYAL  TALENS

AMSTERDAM

ALL
ACRYLICS

Everyone has something creative in them. AMSTERDAM believes in the artist; the artist who opens up his eyes and has the courage to go for it. Who transforms dreams into creations. Use an idea, a vision. Look around you. Surprise and amaze yourself. Dare to dream in color.

AMSTERDAM gives you all the colors and materials you need to express your creativity. Use markers or spray paints if you wish to work quickly and directly. Or choose a

bottle or tube of acrylic colors if you prefer to have more structure and brush strokes in your work. But

**“DO NOT ASK
YOURSELF WHAT
IS EXPECTED
OF YOU. SIMPLY
FIND OUT WHAT
INSPIRES YOU
AND DO IT”**

AMSTERDAM acrylic colors, markers and spray paints are also ideal for combining and mixing them in your work.

In addition to this wide range of colors, AMSTERDAM has a

complete range of auxiliaries. All these products have hardly any technical limitations and allow for almost endless possibilities.

dream × create

Contents:

BINDER

ACRYLIC BINDER *p 4-5*

GROUNDS

TRANSPARENT, WHITE & BLACK GESSO *p 6-7*

MODELING PASTE *p 8-9*

MEDIUMS

ACRYLIC MEDIUM MATT *p 10-11*

ACRYLIC MEDIUM GLOSS *p 10-11*

GLAZING MEDIUM MATT *p 12-13*

GLAZING MEDIUM GLOSS *p 12-13*

ACRYLIC RETARDER & SLOW DRYING MEDIUM *p 14-15*

GEL, HEAVY GEL & EXTRA HEAVY GEL MEDIUM MATT *p 16-18*

GEL, HEAVY GEL & EXTRA HEAVY GEL MEDIUM GLOSS *p 16-18*

THICKENING MEDIUM *p 20-21*

PHOTO TRANSFER GEL *p 22-23*

EFFECT MEDIUMS

GLOW IN THE DARK MEDIUM *p 24-25*

PUMICE MEDIUM FINE MIDDLE & COARSE *p 26-27*

PEARL MEDIUM *p 28-29*

MULTI-GLITTER, BLACK, SILVER & GOLD FLAKES *p 30-31*

PROTECTION

ACRYLIC VARNISH MATT *p 32-33*

ACRYLIC VARNISH SATIN *p 32-33*

ACRYLIC VARNISH GLOSS *p 34*

ACRYLIC VARNISH HIGH GLOSS *p 34*

CLEAR LACQUER *p 35*

ACRYLIC REMOVER *p 36-37*

AMSTERDAM AUXILIARIES CATEGORY NAVIGATION



AMSTERDAM wants to help you create your next masterpiece from start to finish! With the extended range of auxiliaries AMSTERDAM can help you in every stage of your painting. To help you find your product quick and easily the assortment is divided into five specific categories. Each category can be identified by a specific color that can help you navigate to your desired product.

BINDER

Acrylic binder is a product with more than one function. You can use it as a glue for collage techniques as well as a primer for greatly absorbent grounds, such as walls and carton. Using a primer avoids the paint being 'absorbed'. As an artist you can of course also mix your own colors. That, too, is something you can do with acrylic binder. Mix a little pigment with the binder and you can create your own color. In this way you not only determine what goes on the canvas, you also develop the means with which you work.

GROUNDS

With one of the AMSTERDAM grounds you can make a solid foundation to start painting. AMSTERDAM offers various types of gesso as well as a modeling paste. All of these products will leave an 'open paint film after drying, allowing you to work on it with all types of paint. You can choose if you want more or less structure, start from black or white or if you want your ground to be a part of your artwork. The perfect way to start your canvas!

MEDIUMS

Do you want to experiment with your paint? Use the AMSTERDAM mediums. Combine the paint with one of the mediums and see how the character of the paint changes. With the mediums you can make the paint thicker, glossier, thinner or more matt... They are also suitable for gluing various types of material. If you mix the paint with a medium the color becomes somewhat lighter; however, once dry, the paint will have its original color again. A medium does not have any pigment and when wet it is milky white. When dry a medium is completely colorless and transparent again. Adding a medium makes the paint film even more elastic.

EFFECT MEDIUMS

Are looking for special effects or structure to add to your painting? In the effect medium category you can find various mediums that you can use directly from the jar or mix with AMSTERDAM acrylics. These effect mediums offer you the possibility to add a new dimension to your work for more creative expression.

PROTECTION

As an artist you want your work to remain in good condition. It has to be able to last for generations. But you also want your brushes and tools to last as long as possible. To help you do this AMSTERDAM offers you a range of products to protect your artwork and brushes.

ACRYLIC BINDER

GLUE FOR COLLAGE TECHNIQUES

AMSTERDAM acrylic binder is a product with more than one function. You can use it as a glue for collage techniques as well as a primer for greatly absorbent grounds, such as walls and carton. Using a primer avoids the paint being 'absorbed'. Acrylic binder is thick, liquid and milky white when wet, but colorless and transparent when dry.



If you work on open woven textile, treat this first with acrylic binder. This will avoid the Gesso penetrating the canvas.

MAKE YOUR OWN COLORS

Mix a little pigment with the binder and you can create your own color. In this way you not only determine what goes on the canvas, you also develop the means with which you work.



Mixing process of pigment with AMSTERDAM acrylic binder.

Acrylic binder

Purpose: For making acrylic colors, durable gluing of various materials during collage techniques and reducing the absorption of absorbent grounds (primer).

Composition: Resin dispersion.

Qualities:

- Dries quickly and produces an elastic, waterresistant, colorless and transparent film
 - Alkali-resistant, suitable for walls
 - Adheres on all grease-free and dust-free, somewhat absorbent grounds
 - Can be painted over with acrylic colors and gesso
 - Clean utensils with water
 - Apply at temperatures above 10° C
 - Do not freeze
-

| | | |
|-----------------------|------------|----------------|
| | | 1000 ml |
| ACRYLIC BINDER | 005 | 24193005 |



GISSO

A good start is very important! AMSTERDAM modeling paste and gesso have the same specific ingredients. which will leave an 'open' paint film after drying, allowing you to work on it with all types of paint. The perfect start for your canvas!



Irregularities in gesso preparations can be removed by lightly sanding the gesso once dried. Avoid warping grounds such as carton and wooden panels by treating both sides with gesso.

Transparent, white & black gesso

Purpose: Making a universal preparatory layer on various absorbent grounds.

Composition: Acrylic resin dispersion and depending on the type of gesso: titanium dioxide (white gesso), synthetic iron oxide (black gesso), transparent extender (transparent gesso).

Qualities:

- Provides good adhesion for acrylic paint, oil paint and gouache, etc.
- Suitable for absorbent grounds that are free of dust and grease, such as artists' canvas (linen, cotton, etc.), wood, plywood, hardboard, cardboard and paper
- Suitable as preparation for murals on (alkaline) grounds such as fresh concrete, stucco and bricks
- Very absorbent grounds must first be pre-sized with AMSTERDAM acrylic binder 005
- Can be mixed with other AMSTERDAM gesso's
- Can be colored with acrylic paint
- Thinnable with water
- Waterproof when dry
- Use at temperatures above 10° C
- Store frost-free
- Clean utensils with water

| | | 250 ml | 500 ml | 1000 ml |
|--------------------------|-------------|----------|----------|----------|
| TRANSPARENT GESSO | 3000 | 24173000 | 24183000 | |
| WHITE GESSO | 1001 | 24173001 | 24183001 | 24194001 |
| BLACK GESSO | 3007 | 24173007 | 24183007 | |



MODELING PASTE

With the AMSTERDAM modeling paste you can make relief grounds in your work. The modeling paste can be used both on its own and in combination with AMSTERDAM acrylic colors. You can mix the modeling paste with acrylic paint in any ratio, but do note: the paste is white pigmented. If you mix it with paint, the color of your paint will be lighter.

Do you like using several types of paint? That, too, is possible with pure AMSTERDAM modeling paste! This product has the same specific ingredients as gesso and therefore after drying leaves an 'open' paint film allowing you to work on it with all types of paint.



If you want to use the modeling paste for giving structure to your work with large differences in thickness, mix the paste with approx. one-third AMSTERDAM (extra) heavy gel medium. This will avoid cracks due to shrinking during drying.

Modeling paste

Purpose: Making relief grounds.

Composition: Acrylic resin dispersion, thickening agents, titanium dioxide.

Qualities:

- Can be painted over with oil or acrylic paint
- Dries in a few hours, depending on the layer thickness
- Can be mixed with acrylic paint, gel mediums and acrylic mediums
- Can be thinned with water
- Waterproof and non-yellowing
- Clean utensils with water
- Use at temperatures above 10° C
- Store frost-free

| | | 250 ml | 1000 ml |
|----------------|------|----------|----------|
| MODELING PASTE | 1003 | 24173003 | 24193003 |



ACRYLIC MEDIUMS

Acrylic colors are easily thinned with water. If, however, you use extreme amounts of water then there will only be little acrylic resin left. The pigments are then not optimally protected so that they may smudge or run. This can be avoided by thinning the paint with liquid acrylic medium. AMSTERDAM mediums add extra acrylic resin to the paint so that the pigments are optimally protected.



Acrylic medium matt

Purpose: Thinning acrylic paint and reducing the degree of gloss while retaining the durability of the paint film.

Composition: Acrylic resin dispersion, matting agent (silica).

Qualities:

- Milky white, but once dry colorless and transparent
- Shake well before use
- Reduces the degree of gloss
- Does not affect the drying time of the paint
- Increases the flexibility of the paint film
- Can be thinned with water
- Waterproof when dry
- Can be mixed with acrylic paint in any ratio
- Use at temperatures above 10° C
- Store frost-free



Acrylic medium gloss

Purpose: Thinning acrylic paint while retaining the durability of the paint film.

Composition: Acrylic resin dispersion.

Qualities:

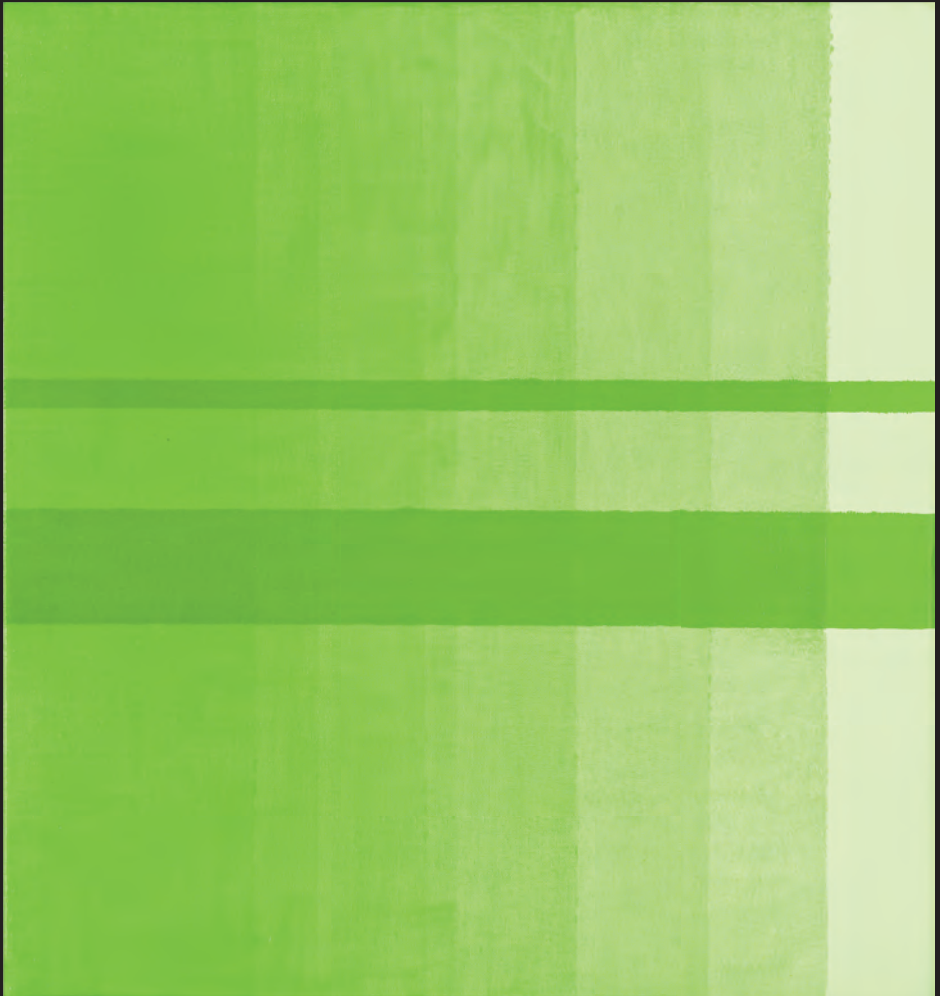
- Milky white, but once dry colorless and transparent
- Increases the degree of gloss
- Does not affect the drying time of the paint
- Increases the elasticity of the paint film
- Can be thinned with water
- Waterproof when dry
- Can be mixed with acrylic paint in any ratio
- Use at temperatures above 10° C
- Store frost-free



| | | 75 ml | 250 ml |
|----------------------|-----|----------|----------|
| ACRYLIC MEDIUM MATT | 117 | 24283117 | 24173117 |
| ACRYLIC MEDIUM GLOSS | 012 | 24283012 | 24173012 |

GLAZING MEDIUMS

Why not apply transparent layers (glazing) in your work with one of the glazing mediums? This way you can influence the colors of the layers below. This gives a beautiful effect particularly for the final layers of your painting.



Glazing medium matt

Purpose: Reducing the gloss and increasing the flow and transparency of glazing layers in acrylic paint.

Composition: Acrylic resin dispersion, matting agent (silica).

Qualities:

- Mix with transparent colors for an optimal glazing effect
- Shake well before use
- Milky white, but once dry colorless and transparent
- Reduces the drying time somewhat
- Can be thinned with water
- Reduces the degree of gloss
- Waterproof when dry
- Use at temperatures above 10° C
- Store frost-free



Glazing medium gloss

Purpose: Increasing the flow, degree of gloss and transparency of the glazing layers in acrylic paint.

Composition: Acrylic resin dispersion.

Qualities:

- Mixing with transparent colors for optimal glazing effect
- Milky white, but once dry colorless and transparent
- Reduces the drying time somewhat
- Can be thinned with water
- Increases the degree of gloss
- Waterproof when dry
- Use at temperatures above 10° C
- Store frost-free



| | | 75 ml | 250 ml |
|-----------------------------|------------|----------|----------|
| GLAZING MEDIUM MATT | 017 | 24283017 | 24173017 |
| GLAZING MEDIUM GLOSS | 018 | 24283018 | 24173018 |

ACRYLIC RETARDER & SLOW DRYING MEDIUM

Working 'wet-on-wet' has to be done quickly when using acrylic paint. AMSTERDAM Acrylic Retarder and slow drying medium gives you more time for this technique as these mediums increase the drying time. Both slow down the drying time, the difference being that slow drying medium also contains acrylic resin. This means that more slow drying medium can be added to the paint. As a result, the medium has more effect on the gloss and transparency of the paint.



Acrylic retarder

Purpose: Delaying the drying of acrylic paint.

Composition: Slowly evaporating polyhydric alcohol.

- Qualities:
- Increases the drying time of acrylic paint by a maximum of 20%
- Evaporates completely from the acrylic paint
- Use sparingly, the thinned paint may not contain more than 5% AMSTERDAM acrylic retarder
- Can be thinned with water



Slow drying medium

Purpose: Delaying the drying of acrylic paint.

Composition: Acrylic resin dispersion, slowly evaporating polyhydric alcohol.

Qualities:

- Increases the drying time of acrylic paint
- Can be mixed with acrylic paint in any ratio
- Can be thinned with water
- Increases, depending on the dosage, the transparency and the degree of gloss
- Can be varnished after at least 3 days of drying
- Use at temperatures above 10° C
- Store frost-free



| | | 75 ml | 250 ml |
|---------------------------|------------|----------|----------|
| ACRYLIC RETARDER | 070 | 24283070 | 24173070 |
| SLOW DRYING MEDIUM | 071 | 24283071 | 24173071 |

GEL, HEAVY GEL & EXTRA HEAVY GEL MEDIUM

Do you need a fuller paint? Mix your acrylic paint with one of the Amsterdam Gel Mediums. These mediums ensure a sharper structure.

Note: A gel medium loses some of its volume during the drying process. The thicker the gel, however, the clearer the brush stroke.

Mixture of AMSTERDAM gel medium with acrylic color.



The AMSTERDAM gel mediums can also be used for gluing materials together. It does not matter what type of gel you use. For very fine and subtle materials you can, if required, thin the AMSTERDAM gel medium with water. If you want to glue together delicate or fine material, such as paper, sand and glass, then it is best to completely cover these materials with the gel. This ensures they will adhere optimally. In order to keep the natural look and colour of the materials that you use as beautiful as possible, it is best to mix these with only a little bit of gel. **Note:** The matt gels leave a white film if you apply them in thicker layers.

Gel, heavy gel & extra heavy gel medium matt

Purpose: Increasing the viscosity and transparency of acrylic colors, reducing the gloss.

Composition: Acrylic resin dispersion, thickening compounds, matting agent (silica).

Qualities:

- Milky white product, dries to a colorless and transparent finish
- Makes acrylic colors thicker
- Increases the brush stroke
- Enables the application in one stroke of extremely thick layers of acrylic color
- Also suitable for gluing all kinds of materials
- Apply at temperatures above 10 °C
- Do not freeze



Gel, heavy gel & extra heavy gel medium gloss

Purpose: Increasing the viscosity, gloss and transparency of acrylic colors.

Composition: Acrylic resin dispersion, thickening compounds.

Qualities:

- Milky white product, dries to a colorless and transparent finish
- Makes acrylic colors thicker
- Increases the brush stroke
- Enables the application in one stroke of extremely thick layers of acrylic color
- Also suitable for gluing all kinds of materials
- Apply at temperatures above 10 °C
- Do not freeze



| | | 250 ml | 500 ml | 1000 ml |
|-------------------------------------|------------|----------|----------|----------|
| GEL MEDIUM MATT | 080 | 24173080 | 24183080 | 24193080 |
| HEAVY GEL MEDIUM MATT | 020 | 24173020 | 24183020 | 24193020 |
| EXTRA HEAVY GEL MEDIUM MATT | 022 | 24173022 | 24183022 | 24193022 |
| GEL MEDIUM GLOSS | 094 | 24173094 | 24183094 | 24193094 |
| HEAVY GEL MEDIUM GLOSS | 015 | 24173015 | 24183015 | 24193015 |
| EXTRA HEAVY GEL MEDIUM GLOSS | 021 | 24173021 | 24183021 | 24193021 |





THICKENING MEDIUM

Oil paint is not the only technique that can make distinct brush strokes. These days with AMSTERDAM you can make a perfect brush stroke on the canvas! Only mix a small percentage of acrylic thickening medium with the acrylic paint and you will have a very thick paint. After the



addition of this medium the color of the paint will remain unchanged, in contrast to gel, as you only need a little of this acrylic thickening medium. If you mix too much of this thickening agent with your acrylic paint it will become too thick to work with. Always use a painting knife to thoroughly mix the thickening medium with the paint. After this you can paint with a brush.

Note! Acrylic thickening medium looks a bit like a gel medium, but isn't one. It does not have any adhesive strength.

Mix AMSTERDAM acrylic thickening medium in very small quantities with a painting knife through the paint.

Thickening medium

Purpose: Increasing the viscosity and brush stroke of acrylic colors without affecting the intensity and opaqueness of the paint.

Composition: Acrylate thickener in water.

Qualities:

- Add in very small quantities
- Mix very well with a painting knife
- Reduces the gloss
- Only use in combination with acrylic colors, not suitable for gluing materials
- Apply at temperatures above 10 °C
- Do not freeze

| | | |
|---------------------------------|------------|---------------|
| | | 250 ml |
| ARYLIC THICKENING MEDIUM | 040 | 24173040 |



PHOTO TRANSFER GEL

Photo transfer gel has been specially developed to allow the inclusion of printed photographs in your work. When the pre-treated photograph has been applied to the ground with photo transfer gel, once thoroughly dried (at least 24 hours), the paper can be carefully removed using water and a brush or a damp cloth. What remains behind is the photograph on the canvas, which can be immediately painted over. For an optimal end result apply an acrylic medium or a varnish.

1. Apply the photo transfer gel on the laserprinted photo.



2. Place the print on the ground and removing all air under the print.



3. Carefully remove the paper using a wet cloth.

4. Final result.



Photo transfer gel

Purpose: Transferring photo prints onto a ground.

Composition: Acrylic resin dispersion.

Qualities:

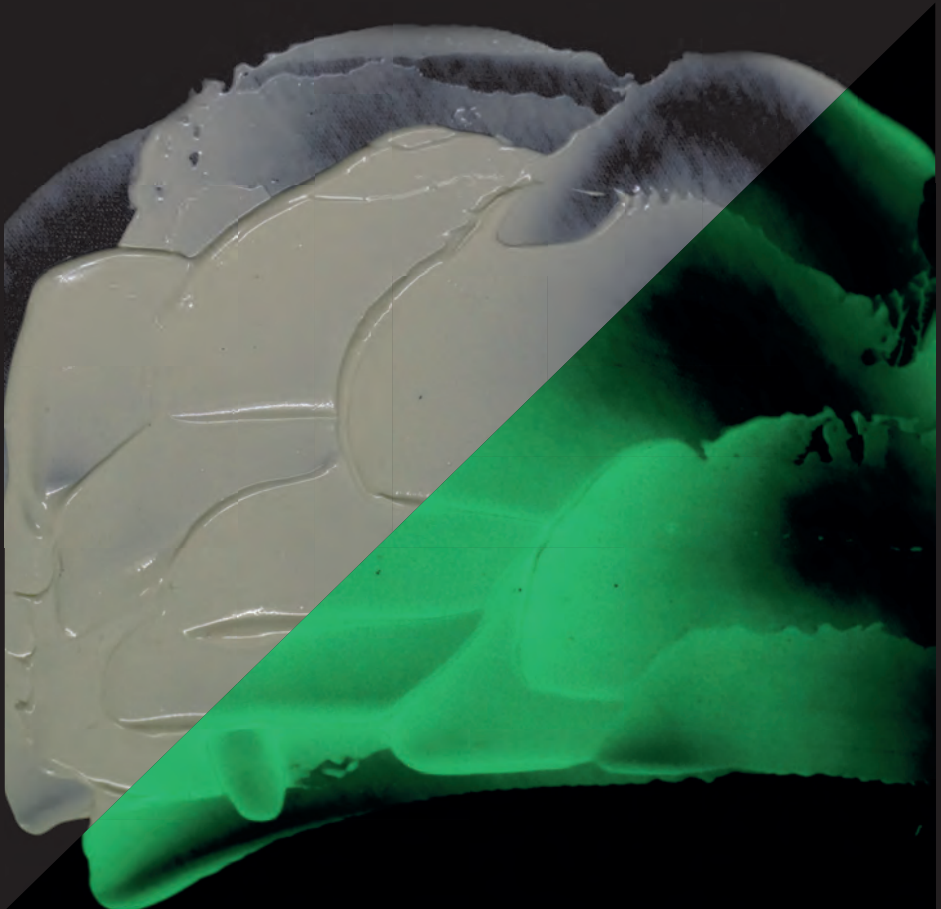
- Only suitable for laser printer and photocopies
- Prepare the paper on the print side with AMSTERDAM photo transfer gel, then press the print side on the ground and rub away any air from under the print
- Leave to dry for at least 24 hours
- When dry, remove the paper by carefully rubbing it using a brush and water or a moist cloth
- Can be painted over with acrylic paint
- For an optimal end result apply an acrylic medium or a varnish
- Waterproof when dry
- Use at temperatures above 10° C
- Store frost-free

| | | |
|---------------------------|------------|---------------|
| | | 500 ml |
| PHOTO TRANSFER GEL | 041 | 24183041 |



GLOW IN THE DARK MEDIUM

With the glow in the dark medium, you can add an extra dimension to your work. Thanks to the phosphorescent pigment, the areas painted with glow in the dark medium will continue to glow in the dark, long after application. Apply glow in the dark medium as final layer on the work for optimal results, mixing with colors will greatly reduce the glow effect.



Glow in the dark medium

Purpose: Provides a glowing effect in the dark.

Composition: Acrylic resin dispersion, phosphorescent pigment.

Qualities:

- To be applied preferably as the final layer on the work for optimal results
 - Afterglow time greatly depends on the light source and time of exposure to the light
 - Mixing with other colors will greatly reduce the glow effect
 - Best applied on white grounds
 - Waterproof when dry
 - Use at temperatures above 10° C
 - Store frost-free
 - Clean utensils with water
-

| | | |
|--------------------------------|------------|---------------|
| | | 500 ml |
| GLOW IN THE DARK MEDIUM | 122 | 24183122 |



PUMICE MEDIUM (FINE, MIDDLE & COARSE)

You can use pumice medium to add structure to your work. Available in 3 grain sizes, this medium, either on its own or in combination with acrylic paint, creates structure and relief in your work.



Pumice medium (fine, middle & coarse)

Purpose: Making grain and relief.

Composition: Acrylic resin dispersion, finely ground pumice.

Qualities:

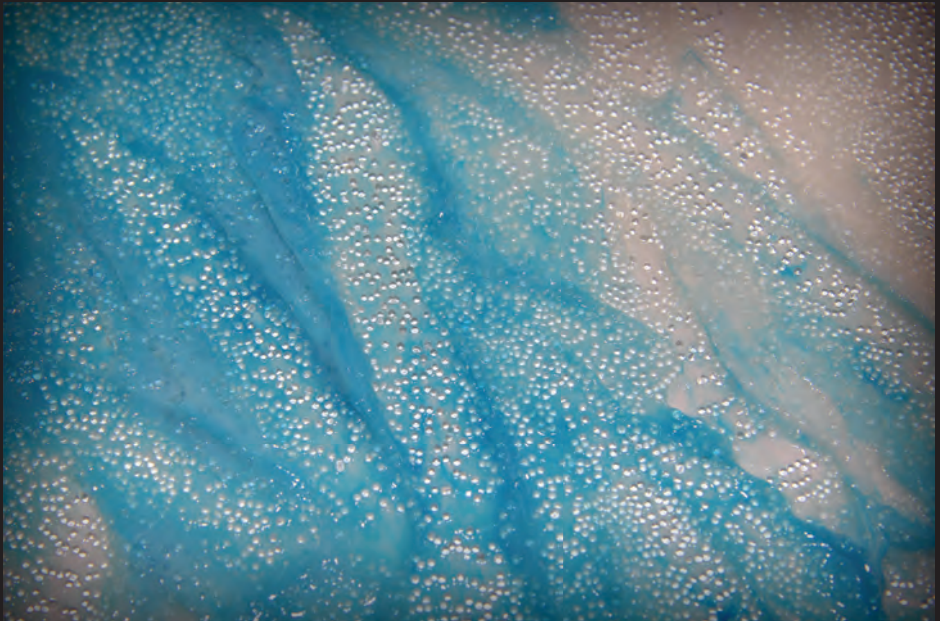
- Can be applied directly or mixed with acrylic paint
- Can be painted over with acrylic paint
- Can be applied in thick layers
- When drying it can be worked on by, for example, cutting and folding
- Waterproof when dry
- Use at temperatures above 10° C
- Store frost-free

| | | 250 ml | 500 ml |
|-----------------------------|------------|----------|----------|
| PUMICE FINE MEDIUM | 126 | 24173126 | 24183126 |
| PUMICE MIDDLE MEDIUM | 127 | 24173127 | 24183127 |
| PUMICE COARSE MEDIUM | 128 | 24173128 | 24183128 |



PEARL MEDIUM

This medium contains tiny round glass beads that above all in combination with transparent acrylic paint, or in pure form, create an attractive glass pearl structure.



Pearl medium

Purpose: Obtaining a glass pearl structure.

Composition: Acrylic resin dispersion, glass beads.

Qualities:

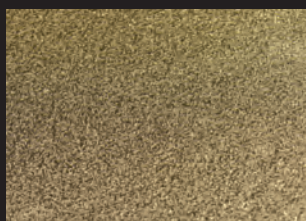
- Can be applied directly or mixed with acrylic paint
- Preferably mix with transparent colors
- Waterproof when dry
- Use at temperatures above 10° C
- Store frost-free

| | | 250 ml | 500 ml |
|--------------|-----|----------|----------|
| PEARL MEDIUM | 125 | 24173125 | 24183125 |



MULTI-GLITTER, BLACK, SILVER & GOLD FLAKES

Each flake has its own unique effect. You can mix it with various gloss mediums (glazing, acrylic or gel), transparent paints or you can sprinkle it on top of wet paint. When desired finish with a gloss varnish to preserve the effect.



Multi-glitter, black, silver & gold flakes

Purpose: Gives various glitter effects.

Composition: flakes (multi-glitter, black, silver or gold).

Qualities:

- Carefully sprinkle or scoop from the pot
- Avoid breathing dust. If necessary wear respiratory protection
- Can be mixed with a gloss gel medium, acrylic, glazing medium or transparent acrylic paints
- If desired, finish with a gloss varnish

| | | 50 g |
|-----------------------------|------------|----------|
| MULTI-GLITTER FLAKES | 123 | 24263123 |
| BLACK FLAKES | 129 | 24263129 |
| SILVER FLAKES | 130 | 24263130 |
| GOLD FLAKES | 131 | 24263131 |



ACRYLIC VARNISHES

As an artist you want your work to remain in good condition. It has to be able to last for generations. But you also want to use your brushes and others tools for as long as possible. To help you do this Amsterdam offers you: Acrylic Varnish (protection of canvas), transparent laquer (for other in- and outdoor surfaces) & acrylic remover (protection of brushes and other tools).

Before you varnish, take the following into account:

- **Ensure that the varnish and your painting are at room temperature while applying and drying. If they are not, this may result in a white film on your work. Changes in temperature can cause condensation under the layer of varnish.**
- **If you have used a lot of medium, first wipe your work with some regular white spirit on a cloth before you apply the layer of varnish. Result: A better adhesion.**
- **If you use the matt varnish from the bottle, then brush the varnish in one direction. This will result in a beautifully even surface (This also applies for a mixture of gloss and matt varnish).**



Acrylic varnish matt

Purpose: Durable protection of an acrylic painting or oil painting (final varnish).

Composition: Acrylic resin, white spirit, turpentine oil, matting agent (silica).

Qualities:

- Apply when paint film has completely dried (with normal film thickness 4 to 5 days)
- Shake well before use
- When applying with a brush do so in one layer and in one direction
- Dries in a few hours
- Does not yellow
- Gives a matt appearance
- Can be thinned with white spirit, clean brushes with white spirit
- Flammable (in spray can: extremely flammable)
- Dry varnish layers can be removed with white spirit



Acrylic varnish satin

Purpose: Durable protection of an acrylic painting or oil painting (final varnish).

Composition: Acrylic resin, white spirit, turpentine oil, matting agent (silica).

Qualities:

- Apply when paint film has completely dried (with normal film thickness 4 to 5 days)
- Shake well before use
- When applying with a brush do so in one layer and in one direction
- Dries in a few hours
- Does not yellow
- Gives a satin gloss
- Can be thinned with white spirit, clean brushes with white spirit
- Flammable (in spray can: extremely flammable)
- Dry varnish layers can be removed with white spirit



| | | 75 ml | 250 ml | 1000 ml | 400 ml |
|------------------------------|------------|----------|----------|----------|----------|
| ACRYLIC VARNISH MATT | 115 | 24283115 | 24303115 | 24323115 | 95163115 |
| ACRYLIC VARNISH SATIN | 116 | 24283116 | 24303116 | 24323116 | 95163116 |

Acrylic varnish gloss

Purpose: Durable protection of an acrylic painting or oil painting (final varnish).

Composition: Acrylic resin, white spirit, turpentine oil.

Qualities:

- Apply when paint film has completely dried (with normal film thickness 4 to 5 days)
- Dries in a few hours
- Does not yellow
- Gives a glossy appearance
- Can be thinned with white spirit, clean brushes with spirit
- Flammable (in spray can: extremely flammable)
- Dry varnish layers can be removed with white spirit



Acrylic varnish high gloss

Purpose: Durable protection of an acrylic painting (final varnish).

Composition: Acrylic resin, white spirit.

Qualities:

- Apply when paint film has completely dried (with normal film thickness 4 to 5 days)
- Dries in a few hours
- Does not yellow
- Gives a high gloss appearance
- Can be thinned with white spirit, clean brushes with spirit
- Flammable (in spray can: extremely flammable)
- Dry varnish layers can be removed with white spirit



| | | 75 ml | 250 ml | 1000 ml | 400 ml |
|-----------------------------------|------------|----------|----------|----------|----------|
| ACRYLIC VARNISH GLOSS | 114 | 24283114 | 24303114 | 24323114 | 95163114 |
| ACRYLIC VARNISH HIGH GLOSS | 113 | 24283113 | 24303113 | 24323113 | |

CLEAR LACQUER

Acrylic paint is increasingly being used on surfaces other than canvas. To better protect your work of art, why not opt for the hard, scratch-resistant clear lacquer, rather than a varnish? Please remember that unlike varnish, this clear lacquer cannot be removed once applied.

Purpose: Durable and scratch-resistant protective layer for the painted ground.

Composition: Krethan technology.

Qualities:

- Does not yellow
- Protects against scratches and is resistant to wear
- Resistant to greasy hands
- Quick-drying and practically odorless
- Cannot be removed
- Not a picture varnish



| | | |
|---------------|-----|----------|
| | | 400 ml |
| CLEAR LACQUER | 133 | 95163133 |



ACRYLIC REMOVER

Acrylic paint dries quickly; therefore you always want to keep brushes wet if you do not intend use them for a short time. But don't worry! If the paint does dry in the bristles, you can use AMSTERDAM Acrylic Remover. This medium allows dried acrylic paint to dissolve. Pour some of the liquid in a small glass jar to a level that will cover some of the ferrule, put your brush in and leave it to soak for an hour. Afterwards clean with water and soap, and your brush is ready to be used again. Don't put the brushes in too much remover as this will also dissolve the varnish on the handle.



Acrylic remover

Interesting fact: AMSTERDAM acrylic remover is fully biodegradable.

Purpose: Removing dried acrylic paint from brushes.

Composition: Naturally occurring solvent.

Qualities:

- Completely biodegradable
- Soak hair bundle of brushes with dried paint remnants for approx. one hour, then clean the brushes with soap and water and rinse off
- Not suitable for removing dried layers of varnish; can damage the acrylic paint
- Can cause irritation

| | | |
|-----------------|-----|----------|
| | | 75 ml |
| ACRYLIC REMOVER | 013 | 24283013 |





Art. Nr. 88150094
2016

ROYAL  TALENS

P.O. Box 4, 7300 AA Apeldoorn, The Netherlands
www.royaltalens.com
www.facebook.com/royaltalens